

Improvement of user-based CF by using spectral clustering techniques

Context: cluster-based CF

neighbours identified based on a clustering method

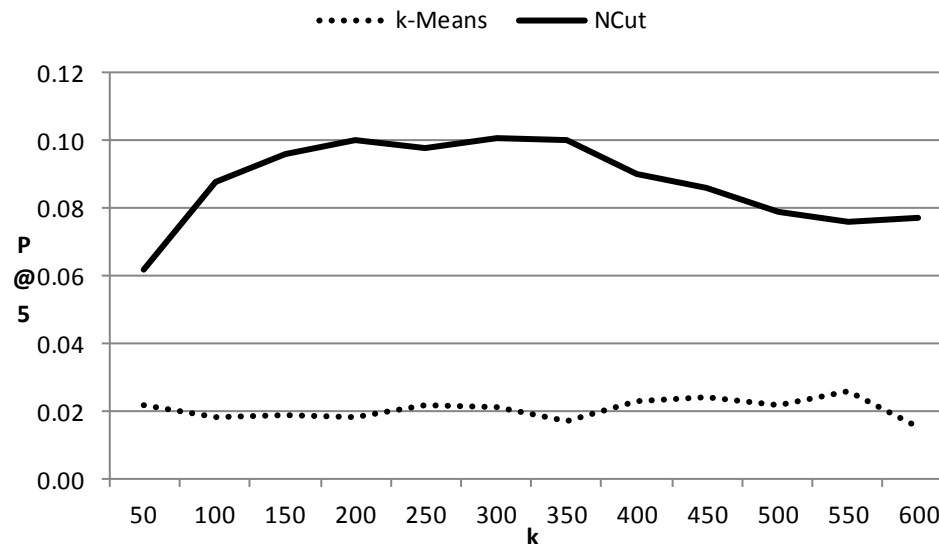
Spectral Clustering: Normalised Cut

Context: cluster-based CF

neighbours identified based on a clustering method

Spectral Clustering: Normalised Cut

Better than k-Means: performance

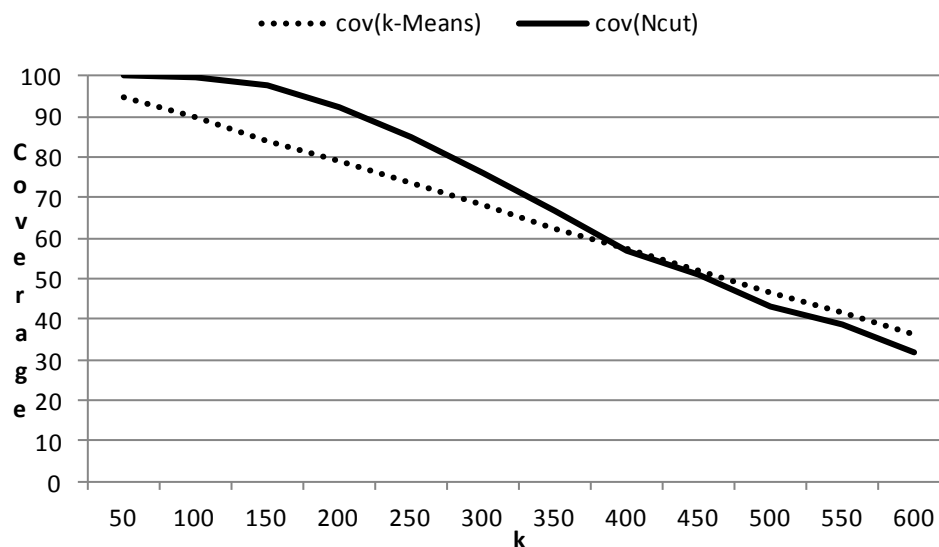


Context: cluster-based CF

neighbours identified based on a clustering method

Spectral Clustering: Normalised Cut

Better than k-Means: coverage



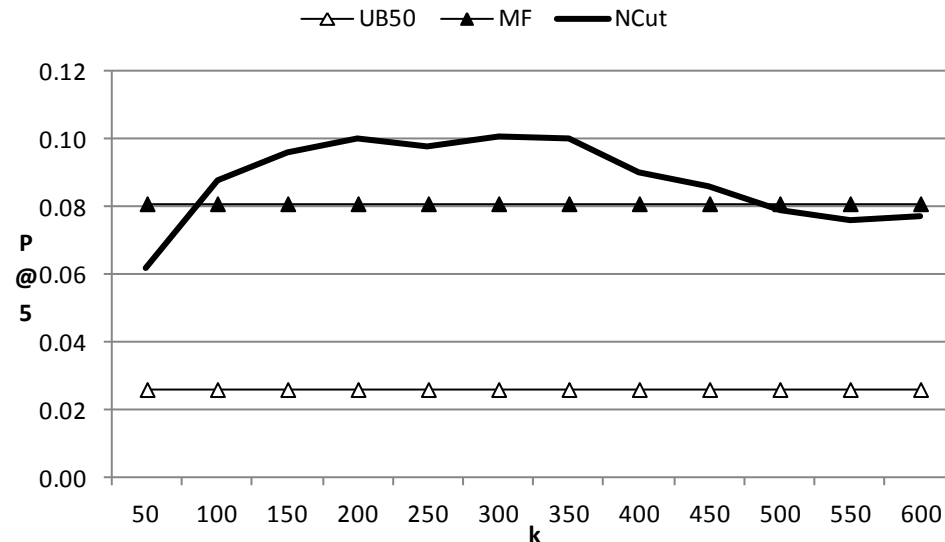
Context: cluster-based CF

neighbours identified based on a clustering method

Spectral Clustering: Normalised Cut

Better than k-Means

Also better than MF and standard UB



Using Graph Partitioning Techniques for Neighbour Selection in User-Based Collaborative Filtering

Alejandro Bellogín

Information Retrieval Group
Universidad Autónoma de Madrid

Javier Parapar

Information Retrieval Lab
University of A Coruña